



## Art Deco oasis in the heart of Melbourne

BY JOSEPH ALLBEURY

**T**hey say you never know your luck in a big city and the opportunity to do something special with their new practice was one that Smile Solutions couldn't pass up when contemplating moving premises.

The opportunity was to create their practice around an Art Deco theme in a magical space on the mezzanine level of a 1930s sandstone building in the heart of the Melbourne CBD.

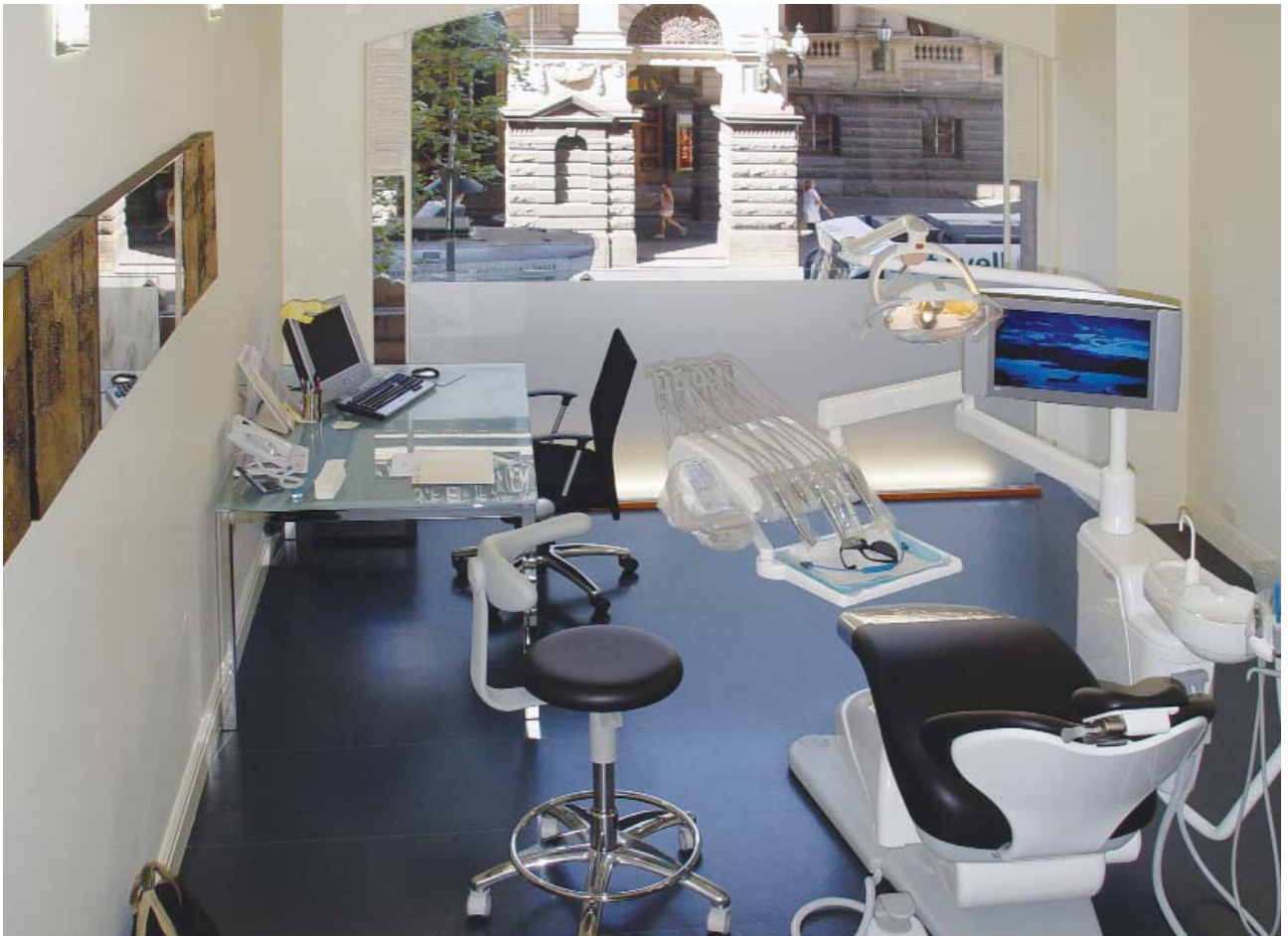
The new practice occupies the entire 800 square metre floor that was once a retail space featuring several boutique shops and serviced by the oldest escalator in Victoria (heritage protected). Gone are the latest fashions, homewares and gifts however and each is now a spacious treatment room. The walls of the individual shops partition perfectly between the large windows that look to the street below both allowing in natural



light and preventing any reduction in size of the operatories.

The individual shopfronts that once contained window displays have also been retained and are now filled with decorative glass draped in a constantly recycled sheet of water. The glass doors are frosted for privacy and detailed with true to the period copper leaf.

The eight treatment rooms feature Anthos dental units supplied by Victorian Dental Services. A top of the range Anthos Kisar Evolution resides in one room and six Anthos A4 Class dental units, all with continental delivery systems, were purchased for the others. A five-year-old Anthos Phase K unit was brought from the old practice. Each unit is equipped with a widescreen LCD TV that is linked to a central multimedia system featuring music CDs and DVDs that can be individually selected from each room



giving the patient a choice of entertainment. Each treatment room and office is also individually climate controlled for personal patient comfort. All the blinds are mechanised and remotely controlled with translucent and blockout options.

Italian Eduardo cabinetry, the latest product to be distributed by Victorian Dental Services, are included in the rooms and feature stainless steel tops with glass splash backs and modern ceramic sinks. The colours were chosen to blend in with the overall contemporary look of the treatment rooms inside that contrasts the Art Deco feel of the non-clinical areas of the practice.

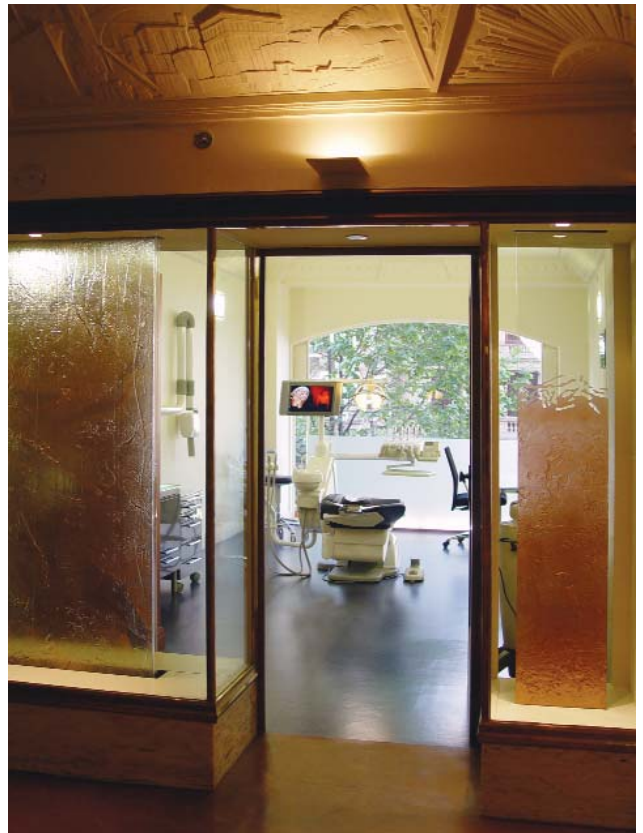
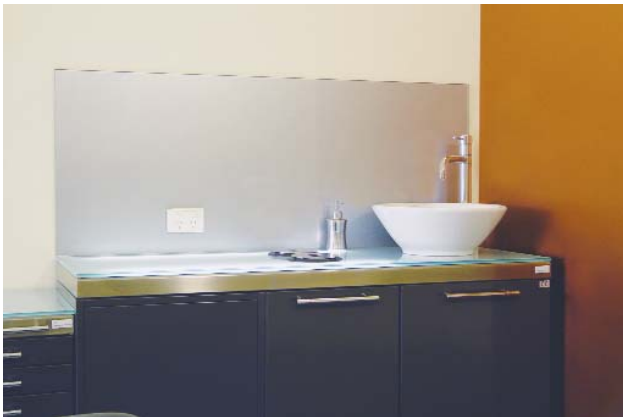
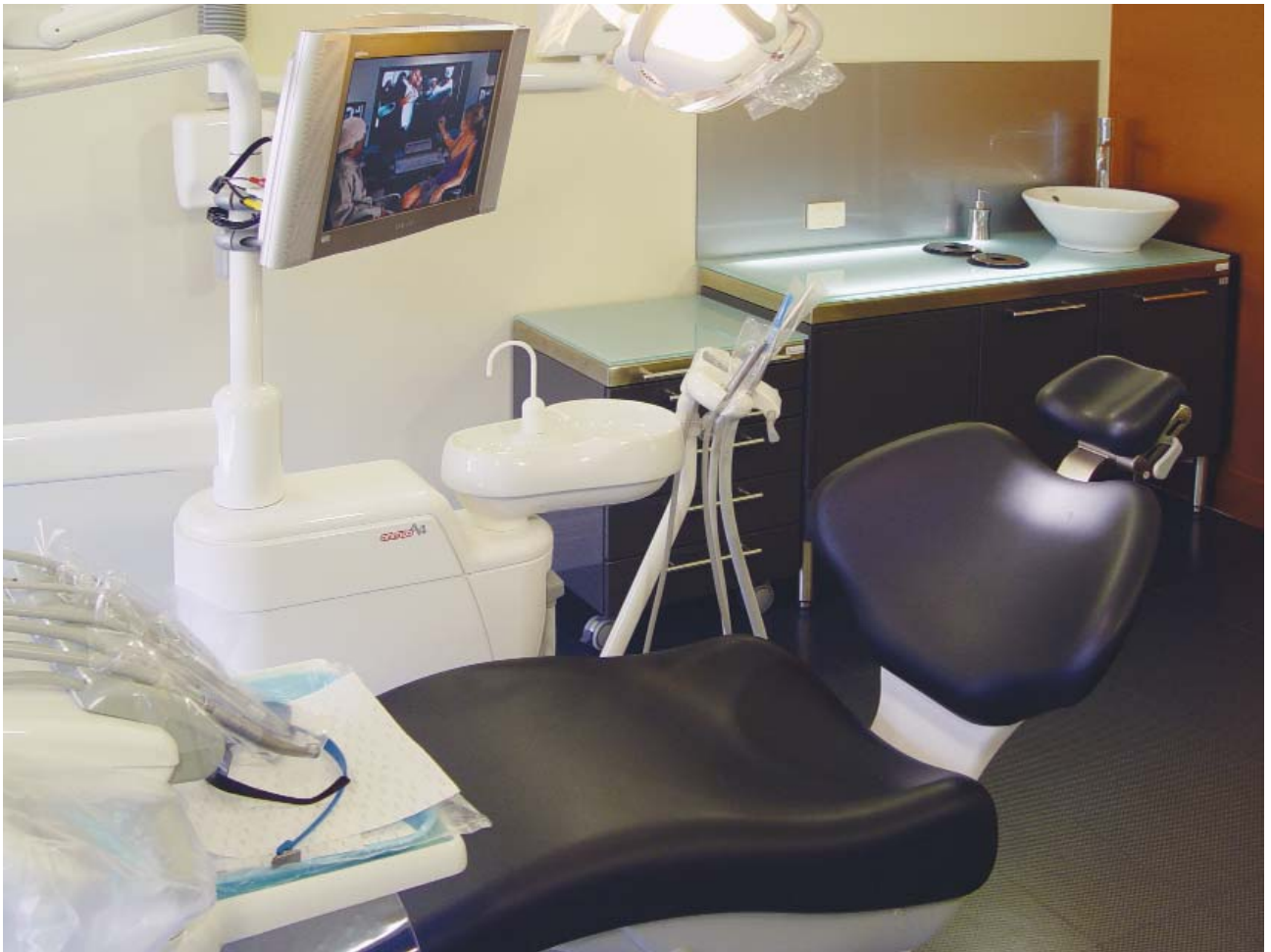
Victorian Dental Services also installed a Cattani K500 compressor and designed the electrical and plumbing systems to ensure the subsequent installation of the equipment went smoothly. Due to heritage restrictions on the building, a false floor was installed throughout.

Each treatment room also has a desk with a computer complete with Sony 17" LCD screen on it for the practitioner to use to access patient records from the Dental-4-Windows practice management system as well as x-rays and other images. There is also an internal messaging system that is accessible from all 25 computers in the practice as an aid to communication.

The sheer size of the practice also presented unique challenges and one issue that was immediately apparent was simply locating staff members so a number of cameras have been installed that can also be accessed from any of the many computers.







The majority of the eight treatment rooms are set-up in a similar fashion and branch off a long decorative corridor that was once a shopping arcade and now abounds in the restored rectilinear and streamlined forms of the Deco period.

The highly ornate ceilings throughout are largely original and typically Deco and were uncovered during the restoration and renovation process, having been sheeted over long ago for a more contemporary look.

The reception area has a charm all its own, with the massive windows to the street filtering light onto the two long bench seats that connect in a 90 degree corner. The zig zag reception counter, crafted to mimic furniture from the Deco period, allows privacy and inti-



macy with patients while also being extremely functional.

Original antique Deco furniture has also been sourced for the offices and administration areas.

More than half the practice is dedicated to amenities for the patients and staff and apart from the reception, doctor and administrative offices, there are consulting rooms for visiting specialists to

use, separate patient toilets and a staff bathroom, a meeting room large enough for the 13 permanent practitioners and numerous staff to meet in that includes a full kitchen and there is even a room that a massage therapist works from.

The sterilisation area features a bank of three Sirona Siroclave B autoclaves and a Kavo Quattrocare handpiece cleaner and lubricator.

The practice also installed a Planmeca digital OPG from Henry Schein Regional and a Digora digital intraoral radiography system supplied by Victorian Dental Services. Images from both can be accessed on all 33 video and computer screens throughout the practice including a 48" plasma screen in the practitioner offices.

Smile Solutions has taken advantage of the opportunity to meld the timeless elegance and beauty of a period long since past with the needs of a modern dental practice. The result is a masterpiece of attention to detail that is a tribute to the dedication of all involved that ultimately benefits the patients, staff, practitioners and the community at large.

