

**BETTER
TOGETHER.**



2024

BETTER TOGETHER.

ABOUT

Both Anthos and MyRay are members of **CEFLA MEDICAL GROUP (ITALY)** – A global leader in the dental equipment sector. Cefla Medical Equipment merges innovation and excellence in production to provide premium solutions for dentistry. Both Anthos and MyRay are backed by this major industrial group and both share a global outlook with a specific local expertise.

[WATCH CEFLA VIDEO](#)

ANTHOS IN AUSTRALIA

We are long standing direct to customer, Australian distributors of ANTHOS & MYRAY. We offer proven experience, expertise and equipment only focus for the local Australian dental profession. Anthos Australia together with Anthos/MyRay Italy

SIMPLY BETTER TOGETHER.

* Prices listed in this promotion do not include installation and freight. Anthos reserves the right to amend pricing in this promotion without notice or obligation. Images are indicative only and may include optional items. Please consult Anthos in Australia more details on the configuration of the products listed in this promotion.

DENTAL UNITS

Anthos, Italy's leading producer of dental units, offers one of the widest range of dental unit models in the world. Providing limitless solutions of products designed to ensure all dentists have a model that suits their individual working style. The Anthos portfolio is split into three ergonomic categories, Classe L, Classe A & Classe R – 7 models and 25 different versions in the Anthos Dental Unit Range.

[WATCH VIDEO](#)

STERILIZATION

The Anthos portfolio is complimented by industry leading proven STERILIZATION solution. 3 different models & 9 different versions within the Anthos Sterilization Range.

[WATCH VIDEO](#)

X-RAY IMAGING

MyRay is a worldwide brand that has earned the trust of dental professionals and radiologists all over the world. The product range, focussed in dental offers a wide product range each with specific technological innovations aimed at enhancing the in-surgery work experience. **This includes:**

Intra Oral: X-ray units, Direct Capture Digital Sensors & Digital Phosphor Plate System.

Panoramic: 2D panoramic imaging units (OPG).

Cone Beam 3D: Multiple 3D imaging platforms & high-performance software.

Multimedia & Integrated Solutions: Intra Oral Camera and multiple integrated (sensor/x-ray/camera) solutions directly connected to the Anthos dental unit range.

Intra Oral Scanner – 3Di IOS: One of the lightest scanners on the market.

[WATCH VIDEO](#)



L9

PREMIUM KNEE BREAK UNIT

MORE INFO

WATCH L9 VIDEO



SUPERIOR EVOLUTION OF OPPORTUNITIES

KNEE BREAK MOTORISED COMPACT UNIT

- Floor-Fixed Treatment Unit with Knee Break Chair
- Cross Over Ergonomics – Highly compact and adaptable to most operating styles.
- Side Delivery option.
- Hybrid Left-Right Operator Version
- Latest steps forward in integrated technology including built in X-ray & Multimedia options.
- Cutting Edge Electronics – Suited demands in conservative, endodontics & oral surgery.

~~RRP: \$63,630 + GST = \$69,993~~

SPECIAL

\$44,450 + GST = \$49,995

3 Versions Available:

1. CONTINENTAL

2. SIDE HANGING HOSE

3. HYBRID LEFT & RIGHT

SIDE DELIVERY VERSION

HYBRID LEFT-RIGHT VERSION



A7

PREMIUM PERFORMANCE & GROWTH

MORE INFO

WATCH A7 VIDEO



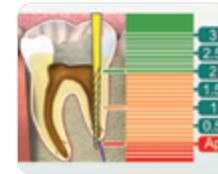
UNLIMITED POTENTIAL

FUTURE PROOF

- Full LCD Colour Interactive Dentist Display inc.
- LED Brushless MicroMotor IMMS. 5.3 nCM
- Anthos UPZ Ultrasonic Scaler.
- Suitable for Endodontics (integrated library)
- Suitable for Implantology via optional peristaltic pump.
- Triple articulating headrest.
- Viscoelastic Memory Foam Upholstery.
- NEW VENUS MCT Premium LED Operating Light

~~RRP \$56,990 + GST = \$62,689~~

\$40,990 + GST = \$44,990



ADVANCED ENDO MODE



ADVANCED COMMUNICATION



IMPLANTOLOGY MODE



MULTI COLOUR TEMP LIGHT TECHNOLOGY



TRIPLE ARTICULATING HEADREST



MEMORY FOAM UPHOLSTERY

CONTINENTAL SIDE FLEX

A5

MORE INFO

WATCH A5 VIDEO

PROVEN **ELECTRIC** PERFORMANCE

- Electric Unit – Quality, Reliability and Performance.
- Electric Low Speed LED Brushless, Motor-iMMS.
- Anthos UPZ Ultrasonic Scaler.
- Anthos Upgraded A2 Series Patient Chair.
- VENUS LED Operating Light.
- Hygienic—S.H.S Water Maintenance System
- With ENDODONTIC FUNCTION Standard (Integrated Apex Locator Optional)

~~RRP: \$44,500 + GST = \$48,950~~

\$31,800 + GST = \$34,990

*"NOW WITH
ENDO FUNCTION"*



ULTRASONIC SCALER



ELECTRIC MOTOR
& ENDO MODE

A3

MORE INFO

WATCH A3 VIDEO

PROVEN **AIR** PERFORMANCE

- Quality & Reliability—Made in Italy
- Hygienic—SHS Water Maintenance System.
- Automated light & hands free suction on-off.
- Multi-Function Footswitch.
- Venus operating light.
- Upgradeable to large suite of Anthos options.

~~RRP: \$34,500 + GST = \$37,950~~

\$24,500 + GST = \$26,950



* Multimedia/Screen/Camera is OPTIONAL Extra
Image may include other optional items.

R7

MORE INFO

WATCH R7 VIDEO



LEFT & RIGHT
HAND DENTAL
UNIT

INFINITE PREMIUM SOLUTIONS.

R FOR REVERSE
- TRUE LEFT & RIGHT (AMBIDEXTROUS) CONVERSION

- LED Brushless MicroMotor iMMs (5.3 ncm) with endodontic settings
- Anthos UPZ Ultrasonic Scaler.
- Anthos R1 Patient Chair with 30 degree rotation.
- Hygienic—S.H.S Water Maintenance System.
- Smart Interactive Touch Screen.
- Full LCD Colour Interactive Dentist Display inc.
- LED Brushless MicroMotor IMMS. 5.3 nCM
- Anthos UPZ Ultrasonic Scaler.
- Suitable for Endodontics (integrated library)
- Suitable for Implantology via optional peristaltic pump.
- Triple articulating headrest.
- Viscoelastic Memory Foam Upholstery.
- NEW VENUS MCT Premium LED Operating Light

~~RRP: \$59,990 + GST = \$65,689~~

\$42,900 + GST = \$47,190



RIGHT HANDED SET-UP



LEFT HANDED SET-UP



R7 CHAIR ONLY
FROM \$9,990+GST= \$10,989



R7 CART ONLY
FROM \$9,990+GST = \$10,989



VENUS LED CEILING MOUNT LIGHTS
FROM \$3990 + GST = \$4389

MULTIMEDIA

WATCH VIDEO

MYRAY CU-2D HD CAMERA



BETTER TOGETHER.

Myray Intra Oral Multimedia and X-Ray integration into Anthos Dental Units – Smart & Effective Patient Communication.

IO CAMERA / SCREEN INTEGRATED ON ANTHOS UNITS

FROM \$6,250 + GST = \$6,875

DIGITAL SENSOR INTEGRATED ON ANTHOS UNITS

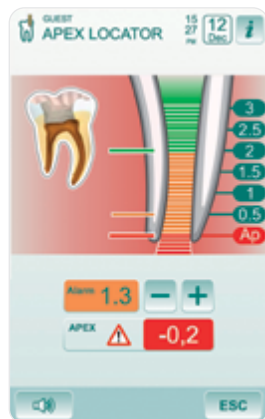
FROM \$6,250 + GST = \$6,875

MYRAY CU-2 HD CAMERA

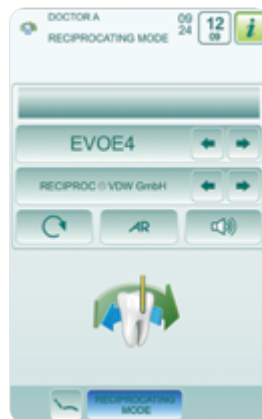
A total digital imaging device featuring Progressive Scan technology, ensuring premium image definition and perfect freeze-frame quality. A digital video system is fully integrated into the handpiece with a high-speed USB2 connection.

\$3,090 + GST = \$3,399

UPGRADES



ENDO / APEX LOCATOR



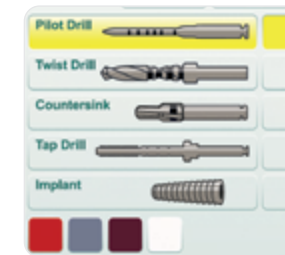
RECIPROCATING MODE



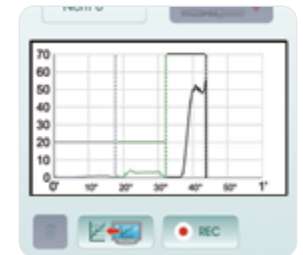
STOOLS



ANTHOS INTEGRATED PERISTALTIC PUMP



IMPLANT MODE



IMPLANT TORQUE CURVES



W.H.E ANTHOS



BIOSTER & FLUSHING



A.C.V.S. ANTHOS

A5 PROFESSIONAL PACKAGE

ENQUIRE NOW

BUY THE COMPLETE PACKAGE FOR

\$86,800

+ GST = \$95,480

ANTHOS MYRAY MID LEVEL SURGERY PACKAGE SUGGESTION:

A cohesive comprehensive surgery package from Anthos & MyRay (Cefla). Quality, Reliability, Flexibility, Security. Excellent buying.



A5 WITH STOOLS

ADD
X5 2D OPG
FOR ONLY
\$19,990*
+ GST 21,890



* PRICING AVAILABLE IN CONJUNCTION WITH FULL A5 PACKAGE BELOW



INTEGRATED MULTIMEDIA



EXTEND IO X-RAY



ZEN-X DIGITAL SENSOR



A17 PLUS STERILIZER



AC200/TURBO A (2-3)



HIGH & SLOW SPEED HANDPIECES

A7 PREMIER PACKAGE FUTURE PROOF

ENQUIRE NOW

BUY THE COMPLETE PACKAGE
FOR

\$102,500

+ GST = \$112,570

ANTHOS MYRAY PREMIUM LEVEL SURGERY PACKAGE SUGGESTION:

A cohesive comprehensive surgery package from Anthos & MyRay (Cefla) Setting you up for long term success.



A7 WITH STOOLS

ADD
X9 2D OPG
(3D UPGRADEABLE)
FOR ONLY
\$29,990*
+ GST 32,989



* PRICING AVAILABLE IN CONJUNCTION
WITH FULL A7 PACKAGE BELOW



INTEGRATED MULTIMEDIA



HYPERSPHERE X-RAY



HY SCAN PSP



A22 PLUS STERILIZER



AC300/TURBO B (3-4)



HIGH & SLOW SPEED
HANDPIECES

X5 2D AIR

MORE INFO

WATCH X5 2D VIDEO

WORLD'S ONLY WALL MOUNT OPG & CEPH



EASY 2D DIAGNOSTICS

NOW ALSO AVAILABLE IN LATERAL CEPH

The first & still the best suspended wall mounted 2D imaging system. The world's smallest, now available for your surgery. Innovative design, flexibility and user friendliness. Out of our experience comes the best solution for every dentist.

- Up to 22 Diagnostic 2D programs.
- Focus Free (MRT) Technology.
- Multilayer (5) Images from One Single Scan.
- Quick Pan Low Dose Functions – 6.6s
- 2D OPG is upgradeable to lateral ceph in future.
- Compatible with other software systems.

2D PANORAMIC (OPG)

~~RRP \$38,450 + GST = \$42,295~~

\$27,250 + GST = \$29,975

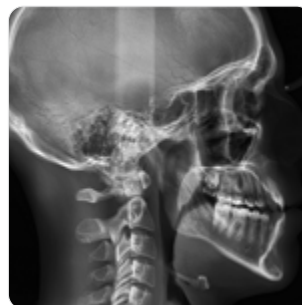
2D PAN/CEPH

~~RRP \$55,200 + GST = \$61,490~~

\$42,250 + GST = \$46,475



PANORAMIC



LATERAL CEPH



CCEPH AP/PA

2D OPG

X9 PRO 2D

PREMIUM UPGRADEABLE 2D IMAGING PLATFORM

MORE INFO

WATCH X9 2D VIDEO

**“NOW ALSO AVAILABLE
OPTIONALLY IN THE LATEST
DCIII - 2D DIRECT CONVERSION
SENSOR TECHNOLOGY”**

WATCH DC TECHNOLOGY VIDEO



ADVANCED PATIENT POSITIONING



INTEGRATED USER SCREEN
(OPTION)



SELECTABLE LEFT OR RIGHT CEPH
INSTALLATION FLEXIBILITY



UPGRADEABLE PLATFORM 3 IN 1

PANORAMIC (OPG), LATERAL CEPH & 3D CBCT UPGRADEABLE

Fully configurable with a modular and scalable design makes it possible to transition from a basic to a more advanced version in an easy and cost-effective manner.

- **ADVANCED KINEMATICS**
The most advanced imaging technology.
- **HD MULTI PAN**
Clear and detailed panoramic images at all times.
- **HIGH ORTHOGONALITY**
Reduces overlapping
- **WIDE RANGE OF FOCAL LAYERS**
- **Focus Free (MRT) Technology**
- **LATERAL CEPH PROJECTION**
with selectable scan length

2D OPG “3D UPGRADEABLE”

RRP ~~\$51,450 + GST = \$56,595~~

\$39,990 + GST = \$43,989

2D OPG/CEPH “3D UPGRADEABLE”

RRP ~~\$65,900 + GST = \$72,490~~

\$49,990 + GST = \$54,989

X5 3D

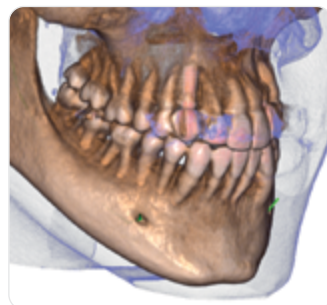
3D CBCT SMART ENTRY

MORE INFO

WATCH X5 3D VIDEO



2D/3DCBCT



3D (UP TO 10 x 10 CM FOV)



MYRAY IRYS - FULL DIMENSION SOFTWARE

EASY 2D/3D DIAGNOSTICS

3D CBCT, PANORAMIC (OPG) & LATERAL CEPH

- 3D Multi FOV – 10 x 10 cm, single scan of the entire dentition, together with smaller FOV for reduced areas of interest.
- Very High Resolution (80µm)
- 3D Workstation & 5 user 3D license included.
- Quick Scan Low Dose Functions – 6.4s
- 3D CBCT is upgradeable to lateral ceph in future
- SCOUT VIEW: improved smaller field of view use
- IMPLANT SIMULATION

3D CBCT 10x10 FOV (& OPG)

RRP ~~\$99,990 + GST = \$103,989~~

SPECIAL

\$72,500 + GST = \$79,750

*INCLUDES 3D WORK STATION

3D CBCT 10x10 FOV (& OPG) WITH LATERAL CEPH

RRP ~~\$122,090 + GST = \$134,299~~

\$85,450 + GST = \$93,995*

*INCLUDES 3D WORK STATION

X9 PRO 3D

3D CBCT PREMIUM PLATFORM
UP TO 13x16cm FOV

MORE INFO

WATCH X9 3D VIDEO

**“NOW ALSO AVAILABLE
OPTIONALLY IN THE LATEST
DCIII - 2D DIRECT CONVERSION
SENSOR TECHNOLOGY”**

WATCH DC TECHNOLOGY VIDEO



OPTIMAL 3D CBCT EXPERIENCE

3D CBCT, PANORAMIC (OPG) & LATERAL CEPH

- Full Arch Volumetric Scanning
- Multiple FOV options – Up to 13 x 16 CM
- 3D Workstation & 5 User 3D licenses included
- Fast CB3D low dose quick scan application (up to 3.4s)
- Advanced implant planning tools
- Endodontic examination with extremely high resolution (up to 68µm)
- Airway volume analysis
- Assessment of zygomatic implants
- Orthodontic applications

X9 PRO 3D CBCT 10 x 8 CM FOV

~~RRP: \$121,500 + GST = \$133,650~~

SPECIAL

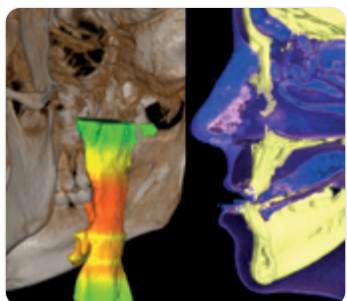
\$84,990 + GST = \$93,489

X9 PRO 3D CBCT 13 x 16 CM LARGE FOV WITH ON BOARD TABLET

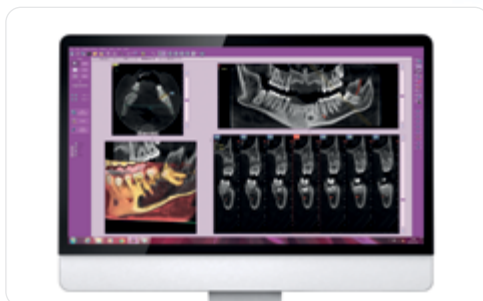
~~RRP: \$135,900 + GST = \$149,490~~

SPECIAL

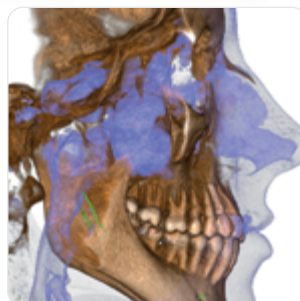
\$94,990 + GST = \$104,489



AIRWAY ANALYSIS



MYRAY IRYS – FULL DIMENSION SOFTWARE



UP TO LARGE 13x16 CM FOV

LATERAL CEPH

PLEASE ADD
\$9900 + GST = \$10,900

(Assumes New Configuration)

10 X-RAYS



MYRAY RX DC WIRELESS HYPERSPHERE
- CHAIR (ANTHOS) MOUNTED



MYRAY RX DC WIRED
- WIRED REMOTE

[MORE INFO](#)

~~RRP: \$7,090 + GST = \$7,799~~
\$5,450 + GST = \$5,995



MYRAY RX DC WIRED CART
MOBILE MOUNTED



MYRAY RX DC WIRELESS EXTEND
- WIRELESS REMOTE

[MORE INFO](#)

RXDC eXtend combines practical wireless simplicity with intelligent design to provide the dentist with precision equipment enabling accurate imaging at low X-ray doses.

~~RRP: \$7,590 + GST = \$8,349~~
\$5,790 + GST = \$6,369 (WIRELESS REMOTE)



MYRAY RX DC WIRELESS
HYPERSPHERE

[MORE INFO](#)

~~RRP: \$8,090 + GST = \$8,899~~
\$6,090 + GST = \$6,699 (WIRELESS REMOTE)

DIGITAL IO X-RAYS

[MORE INFO](#)

[WATCH DIGITAL IO VIDEO](#)



[WATCH ZEN-X VIDEO](#)

ZEN-X SENSORS

New USB direct HD Sensor connection, available in either Size 1 or Size 2. Also available in Integrated Anthos Chair version

Size 1 (Smaller)

~~RRP: \$7,090 + GST = \$7,799~~
\$5,450 + GST = \$5,995

Size 2 (Larger)

~~RRP: \$7,880 + GST = \$8,668~~
\$5,990 + GST = \$6,589

Anthos Dental Unit SENSOR Integration Module:
\$1,200 + GST = \$1,320

MYRAY HY SCAN PHOSPHOR PLATE

Always reliable diagnosis, comfort, and fast capture times. HY-Scan gives access to unrivalled digital technology and film like ergonomics, all in one compact, affordable device. Supplied with one each of Size 0, Size 1, Size 2 & Size 3 Platez

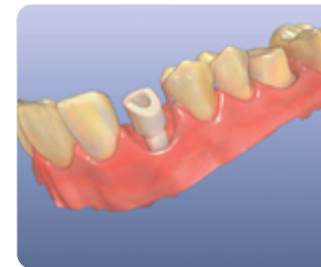
~~RRP: \$7,500 + GST = \$8,250~~
\$9,090 + GST = \$9,999



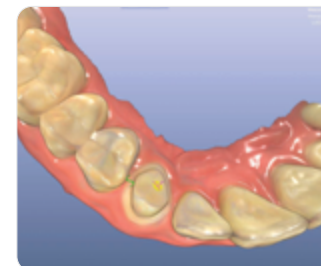
INTRA ORAL SCANNING

[MORE INFO](#)

[WATCH VIDEO](#)



IMPLANT SCANNING



MYRAY 3Di IOS INTRA ORAL SCANNER

ONE OF THE LIGHTEST SCANNERS ON THE MARKET

Full digital impressions with 3Di IOS workflow with the speed and accuracy that only digital technology can provide.

- OPEN SYSTEM 3Di IOS scan files can be exported in three different formats, the most commonly used and universal STL, PLY and OBJ which also contains information on colour texture
- Powder Free
- Colour Scanning
- 2D Video Camera

STERILIZATION

ANTHOS CLASS B STERILIZATION SOLUTIONS

A SOLUTION FOR EVERY PRACTICE

[MORE INFO](#)

[WATCH STERILIZATION VIDEO](#)



A SERIES

RELIABLE. UNCOMPROMISING QUALITY

- Three Sizes – 17L, 22L & 28L
- With Traceability Software for Data Tracking.
- Three Years Warranty or 3000 Cycles

FROM \$9,500 + GST = \$10,450



A PLUS SERIES

INNOVATION WITH TAP WATER USE.

- Three Sizes – 17L, 22L & 28L
- With Traceability Software for Data Tracking.
- LCD Touch Screen
- Tap Water Filling.
- Three Years Warranty or 3000 Cycles

FROM \$10,900 + GST = \$11,990



A PLATINUM SERIES

REWRITE THE RULES

- Three Sizes – 17L, 22L & 28L
- With Traceability Software for Data Tracking
- Large 7" Display on Door with Video Tutorial & LED Status
- PLUS RECYCLES TAP WATER
50 Cycles with 5 Litres of Tap Water.
- Three Years Warranty or 3000 Cycles

FROM \$12,990 + GST = \$14,289